

### Legend

- Parking
- Campground
- Trailhead
- Restroom
- Fee Station
- Gate
- Water Spigot
- Water Hand Pump
- Interpretive Exhibit
- Cabin (Rental)
- Information
- Viewing Area
- Hikers
- Mountain Bikes
- Equestrians
- Creeks / Streams
- Road
- Dirt Road
- Alternate Trail

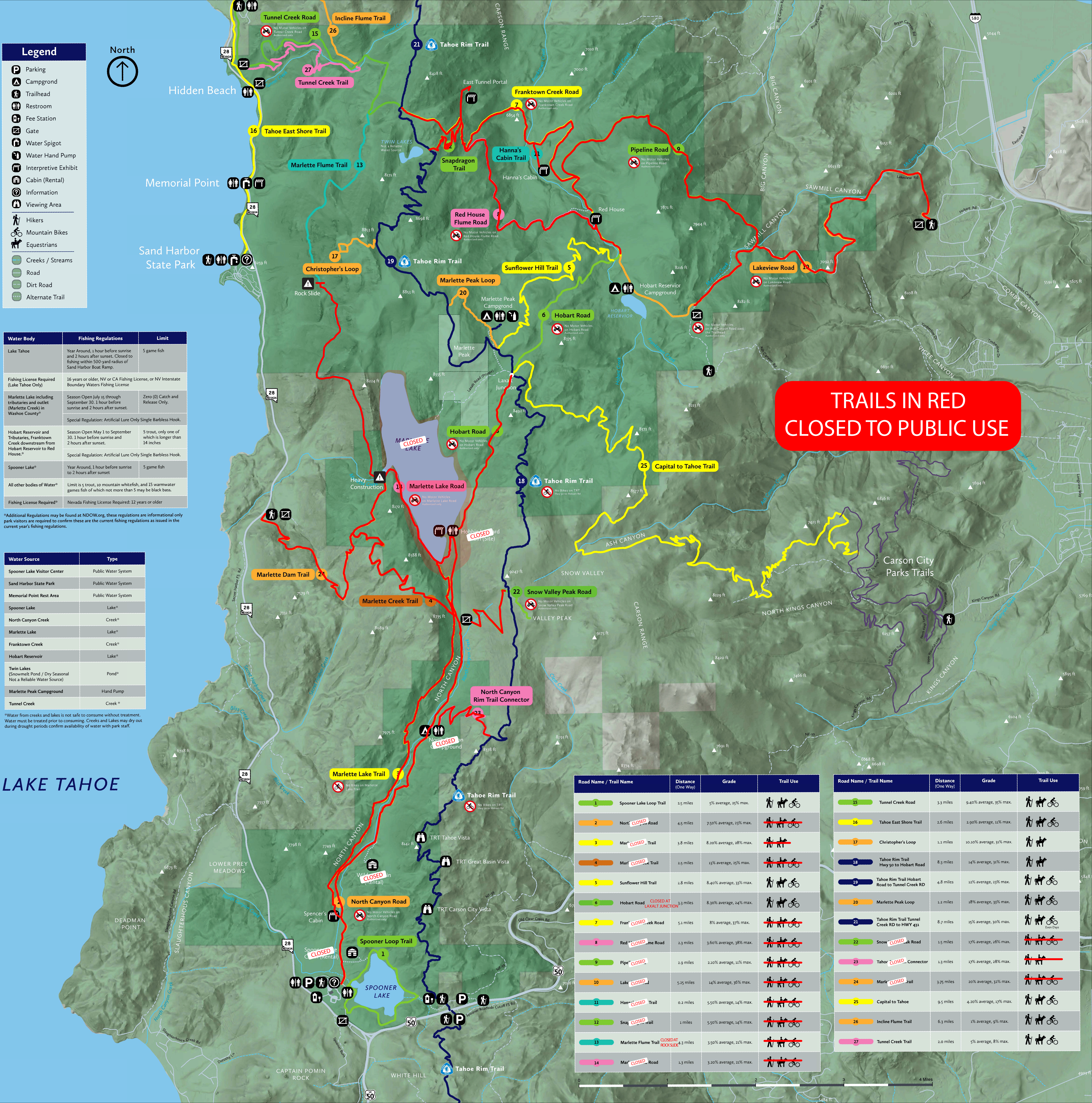
Water Body	Fishing Regulations	Limit
Lake Tahoe	Year Around, 1 hour before sunrise and 2 hours after sunset. Closed to fishing within 500-yard radius of Sand Harbor Boat Ramp.	5 game fish
Fishing License Required (Lake Tahoe Only)	16 years or older, NV or CA Fishing License, or NV Interstate Boundary Waters Fishing License	
Marlette Lake including tributaries and outlet (Marlette Creek) in Washoe County*	Season Open July 15 through September 30. 1 hour before sunrise and 2 hours after sunset. Special Regulation: Artificial Lure Only Single Barbless Hook.	Zero (0) Catch and Release Only.
Hobart Reservoir and Tributaries, Franktown Creek downstream from Hobart Reservoir to Red House.*	Season Open May 1 to September 30. 1 hour before sunrise and 2 hours after sunset. Special Regulation: Artificial Lure Only Single Barbless Hook.	5 trout, only one of which is longer than 14 inches
Spooner Lake*	Year Around, 1 hour before sunrise to 2 hours after sunset	5 game fish
All other bodies of water*	Limit is 5 trout, 10 mountain whitefish, and 15 warmwater games fish of which not more than 5 may be black bass.	
Fishing License Required*	Nevada Fishing License Required: 12 years or older	

\*Additional Regulations may be found at [NDOW.org](http://NDOW.org), these regulations are informational only park visitors are required to confirm these are the current fishing regulations as issued in the current year's fishing regulations.

Water Source	Type
Spooner Lake Visitor Center	Public Water System
Sand Harbor State Park	Public Water System
Memorial Point Rest Area	Public Water System
Spooner Lake	Lake*
North Canyon Creek	Creek*
Marlette Lake	Lake*
Franktown Creek	Creek*
Hobart Reservoir	Lake*
Twin Lakes (Snowmelt Pond / Dry Seasonal Not a Reliable Water Source)	Pond*
Marlette Peak Campground	Hand Pump
Tunnel Creek	Creek*

\*Water from creeks and lakes is not safe to consume without treatment. Water must be treated prior to consuming. Creeks and Lakes may dry out during drought periods confirm availability of water with park staff.

## LAKE TAHOE



**TRAILS IN RED  
CLOSED TO PUBLIC USE**

Road Name / Trail Name	Distance (One Way)	Grade	Trail Use
1 Spooner Lake Loop Trail	1.5 miles	5% average, 25% max.	Hikers, Mountain Bikes, Equestrians
2 North Canyon Road	4.5 miles	75% average, 33% max.	Hikers, Mountain Bikes, Equestrians
3 Marlette Creek Trail	3.8 miles	8.2% average, 28% max.	Hikers, Mountain Bikes, Equestrians
4 Marlette Creek Trail	2.5 miles	13% average, 25% max.	Hikers, Mountain Bikes, Equestrians
5 Sunflower Hill Trail	2.8 miles	8.4% average, 33% max.	Hikers, Mountain Bikes, Equestrians
6 Hobart Road	3.3 miles	8.3% average, 24% max.	Hikers, Mountain Bikes, Equestrians
7 Franktown Creek Road	5.1 miles	8% average, 37% max.	Hikers, Mountain Bikes, Equestrians
8 Red House Flume Road	2.3 miles	3.6% average, 38% max.	Hikers, Mountain Bikes, Equestrians
9 Pipeline Road	2.9 miles	22% average, 11% max.	Hikers, Mountain Bikes, Equestrians
10 Lakeview Road	5.25 miles	14% average, 36% max.	Hikers, Mountain Bikes, Equestrians
11 Hanna's Cabin Trail	0.2 miles	5.5% average, 14% max.	Hikers, Mountain Bikes, Equestrians
12 Snapdragon Trail	1 miles	5.5% average, 14% max.	Hikers, Mountain Bikes, Equestrians
13 Marlette Flume Trail	4.3 miles	3.5% average, 21% max.	Hikers, Mountain Bikes, Equestrians
14 Marlette Lake Road	1.3 miles	3.2% average, 21% max.	Hikers, Mountain Bikes, Equestrians

Road Name / Trail Name	Distance (One Way)	Grade	Trail Use
15 Tunnel Creek Road	3.3 miles	9.4% average, 35% max.	Hikers, Mountain Bikes, Equestrians
16 Tahoe East Shore Trail	2.6 miles	2.9% average, 11% max.	Hikers, Mountain Bikes, Equestrians
17 Christopher's Loop	1.2 miles	10.1% average, 31% max.	Hikers, Mountain Bikes, Equestrians
18 Tahoe Rim Trail Hwy 50 to Hobart Road	8.3 miles	14% average, 31% max.	Hikers, Mountain Bikes, Equestrians
19 Tahoe Rim Trail Hobart Road to Tunnel Creek RD	4.8 miles	12% average, 23% max.	Hikers, Mountain Bikes, Equestrians
20 Marlette Peak Loop	1.2 miles	18% average, 33% max.	Hikers, Mountain Bikes, Equestrians
21 Tahoe Rim Trail Tunnel Creek RD to HWY 431	8.7 miles	15% average, 30% max.	Hikers, Mountain Bikes, Equestrians
22 Snow Valley Peak Road	1.5 miles	17% average, 26% max.	Hikers, Mountain Bikes, Equestrians
23 North Canyon Rim Trail Connector	1.3 miles	17% average, 28% max.	Hikers, Mountain Bikes, Equestrians
24 Marlette Lake Road	3.75 miles	20% average, 32% max.	Hikers, Mountain Bikes, Equestrians
25 Capital to Tahoe	9.5 miles	4.2% average, 17% max.	Hikers, Mountain Bikes, Equestrians
26 Incline Flume Trail	6.3 miles	1% average, 9% max.	Hikers, Mountain Bikes, Equestrians
27 Tunnel Creek Trail	2.0 miles	5% average, 8% max.	Hikers, Mountain Bikes, Equestrians

