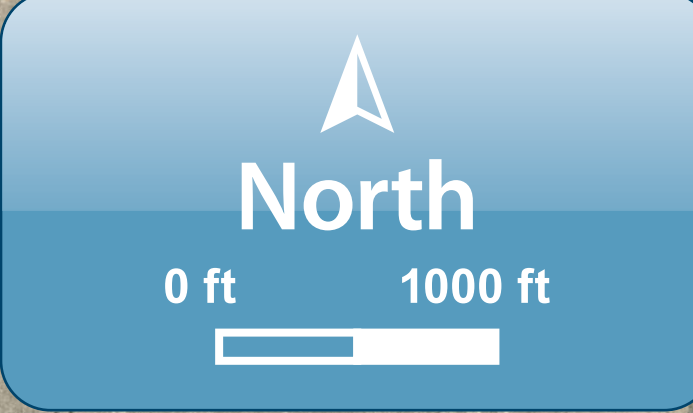


# South Fork State Recreation Area

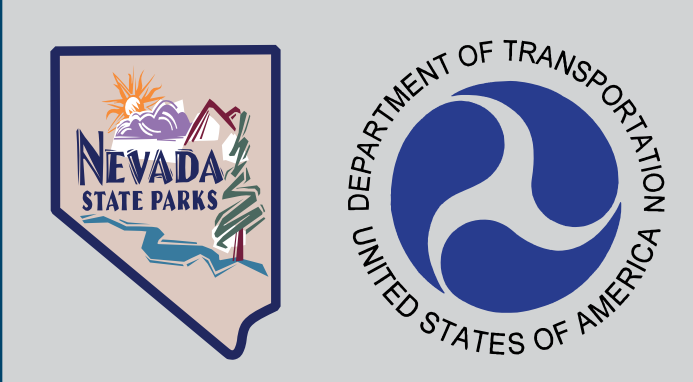


## TRAIL USE

- Hiking
- Bicycles
- Equestrians
- Dogs on Leash
- No Motor Vehicles

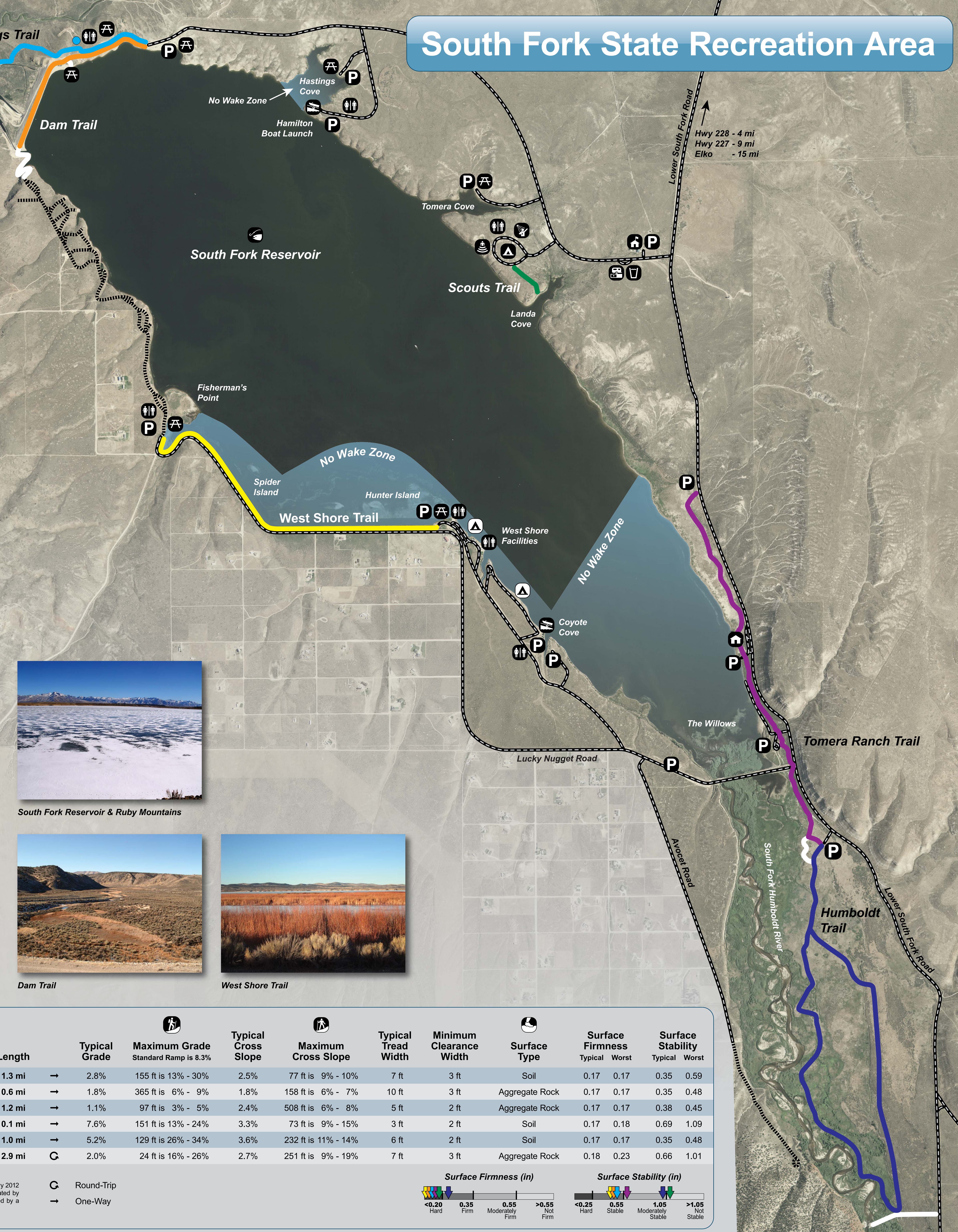
## LEGEND

- Fishing
- Parking
- Showers
- Restroom
- Picnic Area
- Boat Launch
- Amphitheater
- Drinking Water
- Entrance Station
- Tomera Campground
- Sanitary Dump Station
- Historic Tomera Ranch
- West Shore Campground
- Road
- 4WD Road
- Secondary Trail
- Trail Access Information



Funded by the Nevada Recreational Trails Program

Signage by Beneficial Designs Inc.  
www.beneficialdesigns.com  
Nevada Office: 775.783.8822  
"Designing beyond the norm to meet the needs of all people."



South Fork Reservoir & Ruby Mountains



Dam Trail



West Shore Trail

## TRAIL ACCESS INFORMATION

Trail Name	Length	Typical Grade	Maximum Grade Standard Ramp is 8.3%	Typical Cross Slope	Maximum Cross Slope	Typical Tread Width	Minimum Clearance Width	Surface Type	Surface Firmness		Surface Stability	
									Typical	Worst	Typical	Worst
Tomera Ranch Trail	1.3 mi	→	2.8%	155 ft is 13% - 30%	2.5%	77 ft is 9% - 10%	7 ft	3 ft	0.17	0.17	0.35	0.59
Dam Trail	0.6 mi	→	1.8%	365 ft is 6% - 9%	1.8%	158 ft is 6% - 7%	10 ft	3 ft	0.17	0.17	0.35	0.48
West Shore Trail	1.2 mi	→	1.1%	97 ft is 3% - 5%	2.4%	508 ft is 6% - 8%	5 ft	2 ft	0.17	0.17	0.38	0.45
Scouts Trail	0.1 mi	→	7.6%	151 ft is 13% - 24%	3.3%	73 ft is 9% - 15%	3 ft	2 ft	0.17	0.18	0.69	1.09
Hastings Trail	1.0 mi	→	5.2%	129 ft is 26% - 34%	3.6%	232 ft is 11% - 14%	6 ft	2 ft	0.17	0.17	0.35	0.48
Humboldt Trail	2.9 mi	↻	2.0%	24 ft is 16% - 26%	2.7%	251 ft is 9% - 19%	7 ft	3 ft	0.18	0.23	0.66	1.01

**WARNING:**  
Trail conditions may have changed since January 2012 when these trails were assessed. Signage created by Beneficial Designs Inc. using trail data collected by a certified trail assessment coordinator.

- ↻ Round-Trip
- One-Way

